



Indoor Small Pixel Pitch

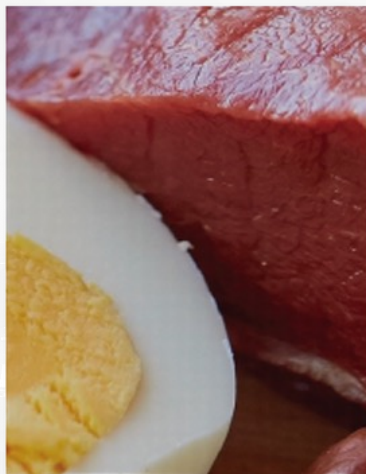
COB600-Series

Waterproof/Dustproof/Impact resistant

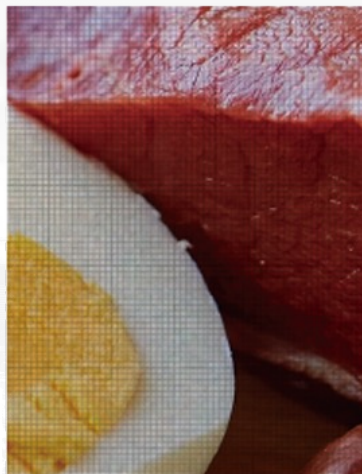
Due to the small spacing of traditional SMD small-pitch display screens, the display unit cannot be glued or covered, and the LED is exposed outside, making the display waterproof, dustproof, and collision-proof an obstacle that dust cannot pass through. Even during transportation, the lamp beads will be knocked off.

COB integrated packaging technology completely overcomes the difficulties that SMD small pitch cannot overcome, and truly achieves waterproof, dustproof, and impact resistance.





COB



SMD

COB packaging achieves better video optical performance through chip-level packaging, resulting in more comfortable and soft picture quality without obvious pixel graininess, making it more suitable for applications under conditions such as "close distance", "indoor ambient light", and "longer viewing time".



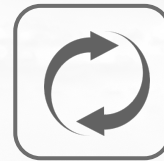
HD resolution



Front Maintenance



Dual system



High refresh rate



Fast installation



Wide Viewing-angle

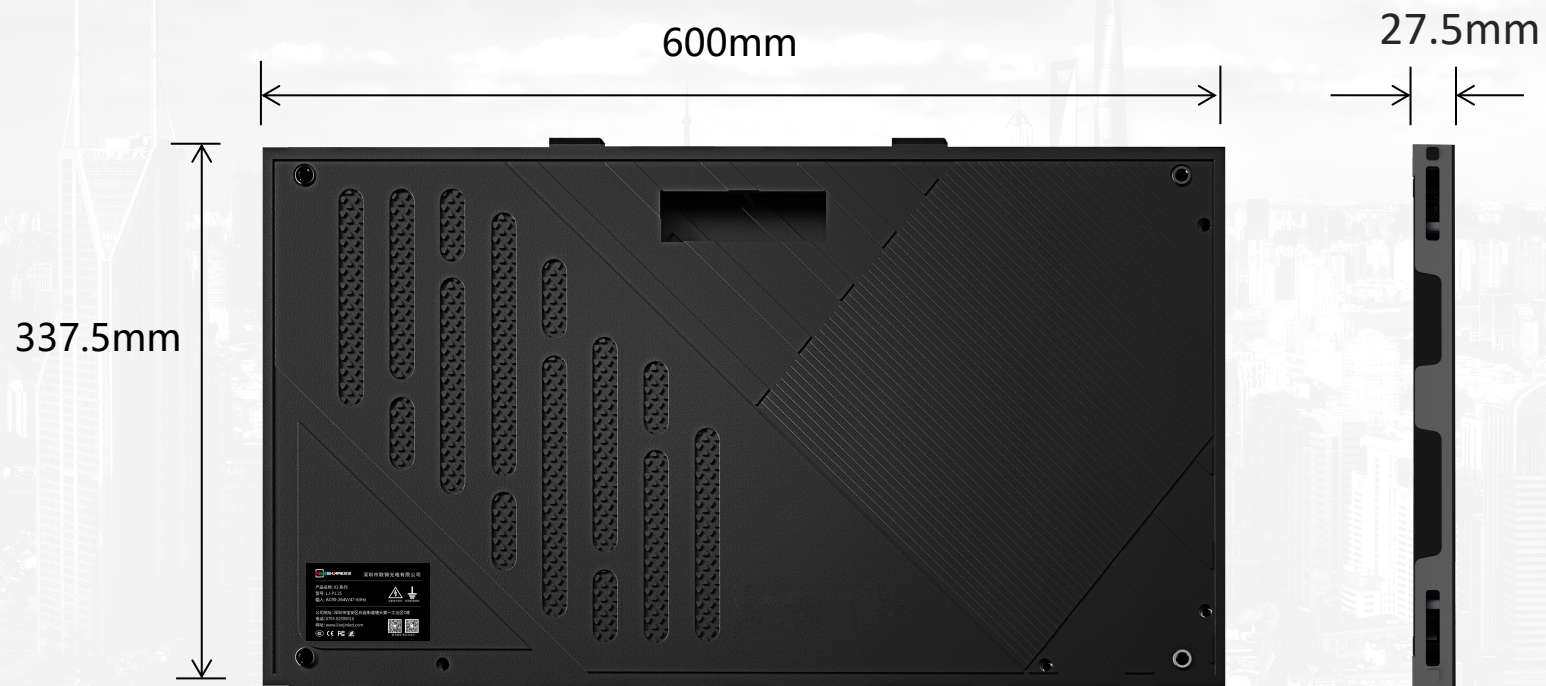


Silent operation



High Contrast Ratio

Dimension



LED SINO

Weight 4.5kg





Wide Color Gamut +HDR

High color coverage and accurate restoration of natural HDR can reproduce the peak of high dynamic range imaging, display more color details, and make the picture more realistic.



Seamless splicing of cabinets to create 2K, 4K, 8K, 16K
ultra-high-definition LED screens.

16K



8K

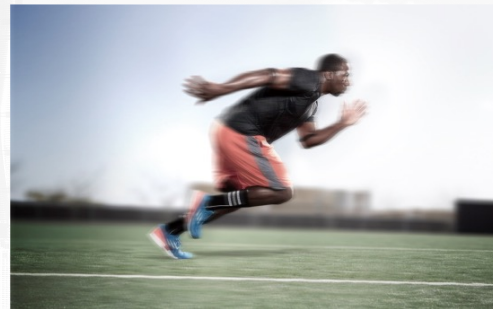
4K

2K

High refresh rate

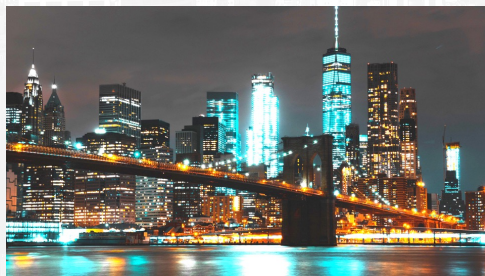


High refresh rate

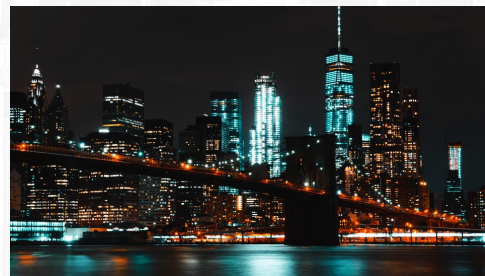


Low refresh rate

High grey scale



Hig grey scale



Low grey scale

LEDSINO

170° Super wide viewing angle

Perfect presentation of images from any angle





LED SINO



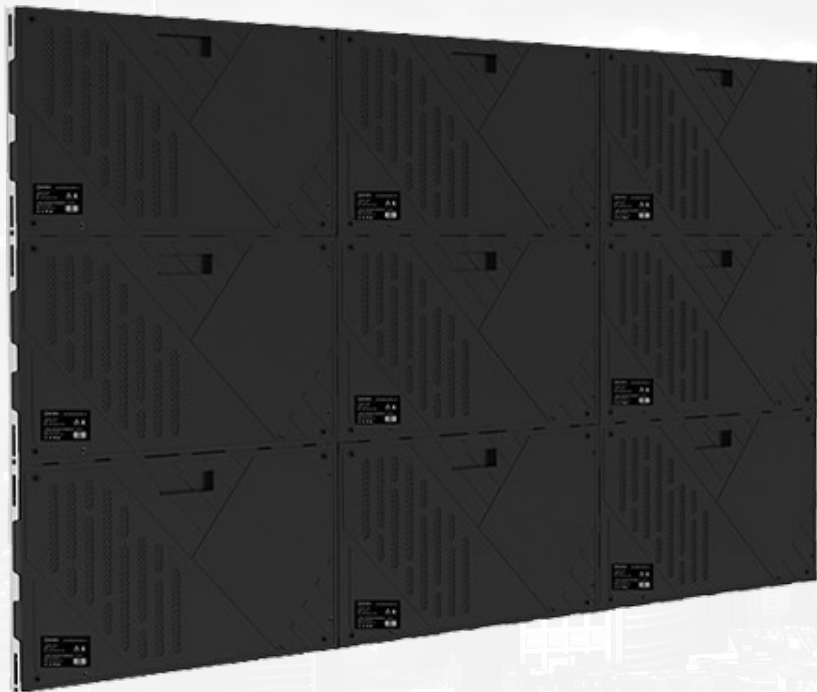
Front Maintenance

Can be applied to different installation environments

Seamless Splicing

Die-cast aluminum cabinet, CNC high-precision processing (cabinet flatness $\leq 0.1\text{mm}$);
Screw-free design, faster and safer installation;
Ultra-quiet fanless design.



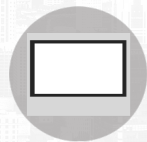


Installation mode

- Wall-mounted/embedded/hanging;
- Floor-mounted/curved.



Stick to the wall



mosaic



hoisting



Floor mounted



Curved installation



LED SINO



Pixel Pitch

P0.78125

P0.9375

P1.25

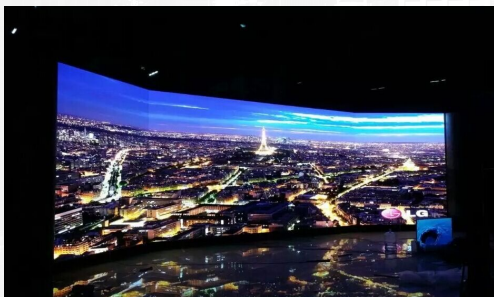
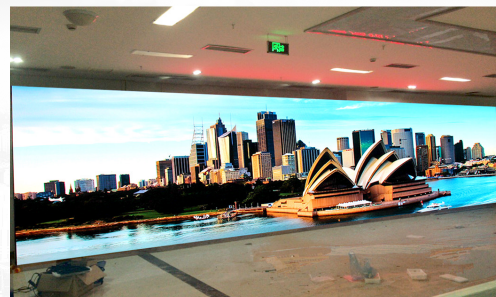
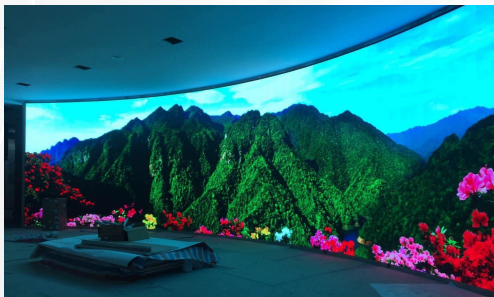
P1.5625

Packaging type	Inversion	Inversion	Inversion	Inversion
Physical density(Dot/sqm)	1638400	1137778	640000	409600
Module resolution	192X216	160X180	120X135	96X108
Module size(mm)	150X168.75	150X168.75	150X168.75	150X168.75
Panel Dimension (WXHXD/mm)	600X337.5X27.5	600X337.5X27.5	600X337.5X27.5	600X337.5X27.5
Panel Resolution	768X512	640X360	480X270	384X216
Module QTY(WXH)	4X2	4X2	4X2	4X2
Panel weight(kg)	4.5	4.5	4.5	4.5
Maintenance Mode	Front maintenance	Front maintenance	Front maintenance	Front maintenance
Cabinet Material	Die-casting aluminum	Die-casting aluminum	Die-casting aluminum	Die-casting aluminum
Brightness Calibration	Have	Have	Have	Have
Brightness(Nits)	≥600	≥600	≥600	≥600
Color temperature(K)	1000-18500 Optional	≥600	1000-18500 Optional	1000-18500 Optional
Viewing angle(V/H)	170°/170°	1000-18500 Optional	170°/170°	170°/170°
Brightness/Color uniformity	≥99.8%	170°/170°	≥99.8%	≥99.8%
Contrast ratio	10000 : 1	≥99.8%	10000 : 1	10000 : 1
Frame frequency	50/60	10000 : 1	50/60	50/60
Drive mode	48-96 scan	50/60	1/60 scan	1/48 scan
Grey level	16bit	1/60 scan	16bit	16bit
Refresh rate(Hz)	3840	16bit	3840	3840
Max. power consumption(W/sqm)	420	3840	420	420
Avg. power consumption(W/sqm)	80-150	420	80-150	80-150
Protection level	IP31	80-150	IP31	IP31
Power input	IP31 AC90-264V,47-63Hz			
Working temperature/humidity(°C/RH)	-20~60°C/10%~85%			
Storage temperature/humidity(°C/RH)	-20~60°C/10%~85%			
Certification	CCC/CE/RoHS/FCC/CB/TUV/IEC			

Cases



Cases





LED SINO

THANKS



SHENZHEN LED SINO OPTOELECTRONIC CO., LTD.

Web: <https://www.ledsino.com/>

Tel: 0086-13421345624; Email: manager@ledsino.com

Add: Building D, Hongfa Science Park, 2035 Songbai Road, Shiyan, Bao'an District, Shenzhen, Guangdong, China.