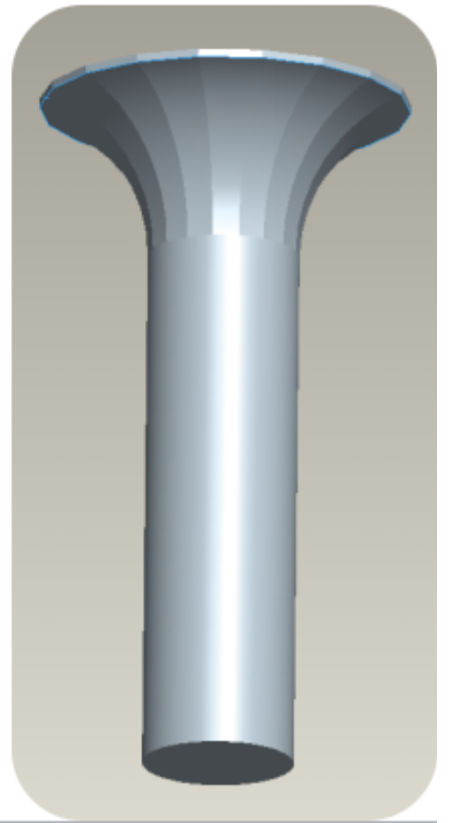
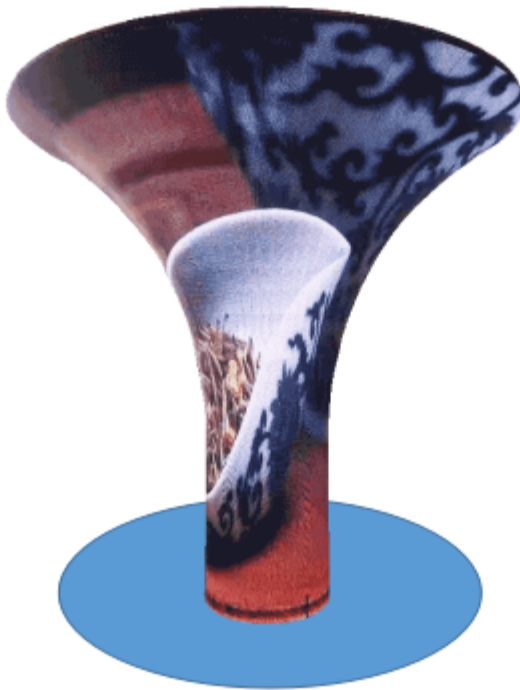
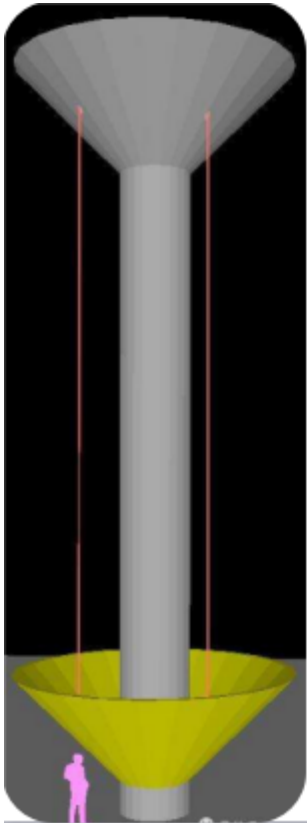
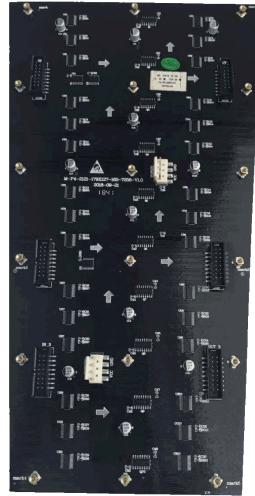
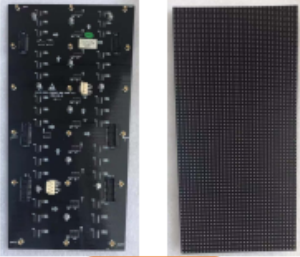


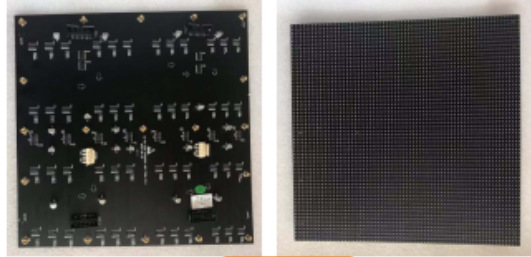
Pixel Pitch	4mm			
Pixel Resolution	62500			
Module Resolution	W64 * H32			
Module Size	W256mm * H128mm	top316.19mm bottom222.48mm side320mm	top222.48mm bottom156.65mm side321mm	top179mm bottom127.35mm side321mm
Thickness	1.6mm, 16mm include flexible fence			
Driver Mode	16bit Current Driving			
Scan Mode	1/16			
Operation Voltage	DC5V ± 10%			
Max Module Current	around 4A	around 10A	around 8A	around 6A
Max Power Consumption	around 20W	around 50W	around 40W	around 30W
Power Interface	VH4			
Signal Interfac	HUB75D(IDC16)			
Max Brightness	≥1000cd/m ²	≥1000cd/m ²	≥1000cd/m ²	≥1000cd/m ²
Color Temperator	9500K			
Viewing Angle	Horizontal 140° Vertical 140°			
Best Viewing Distance	≥4m	≥4m	≥4m	≥4m
Brightness adjustment	0 to 255 adjustable			
Grey Level	14bits			
Brightness Calibration	supported	supported	supported	supported
Refresh rate	960Hz	960Hz	960Hz	960Hz
Brightness Adjust Rang	0 to 255 adjustable			
Life spam	50,000 Hour	50,000 Hour	50,000 Hour	50,000 Hour
Operation temperature	-10 °C ~ 50 °C			
Stock temperature	-30 °C ~ 80 °C			
Operation humidity	-10%-80%RH without condensation			

Note: The goods continue update, specification subjected to change without prior notice, please confirm before order.



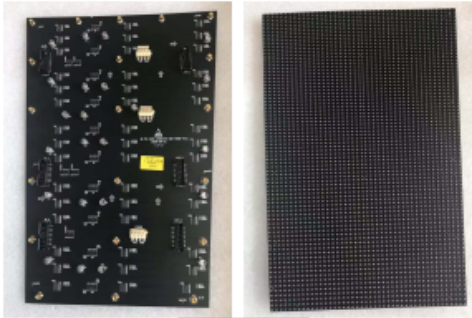


No.1



No.2

Step One



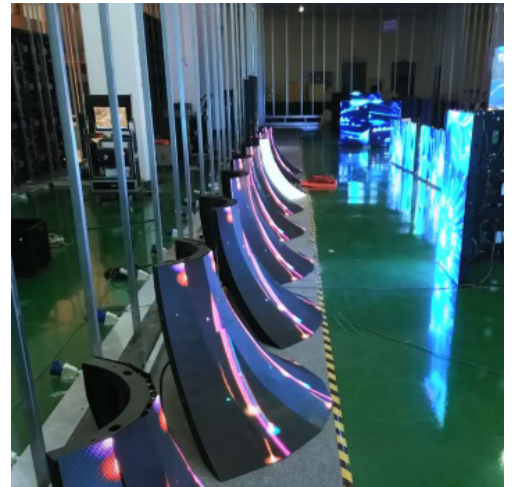
No.3



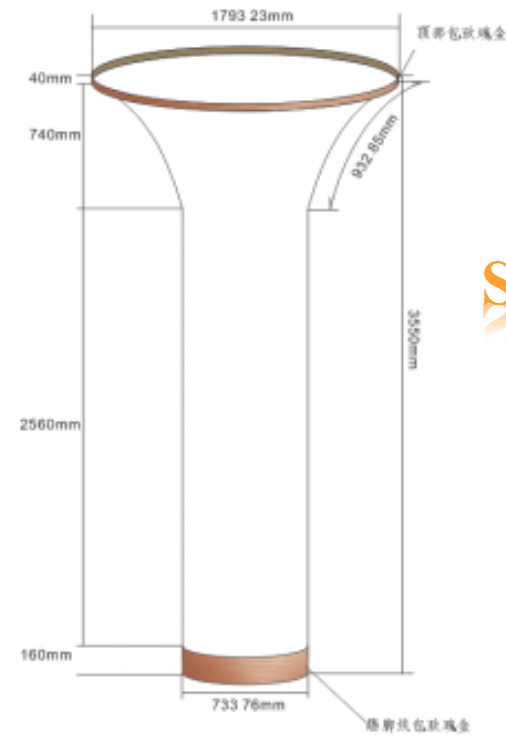
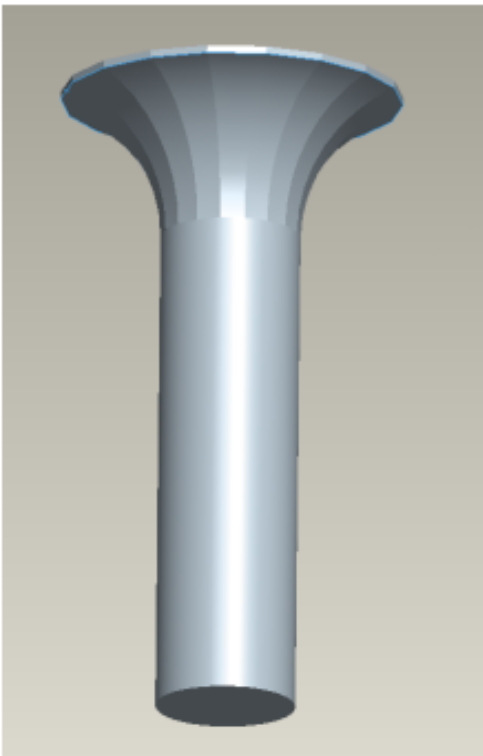
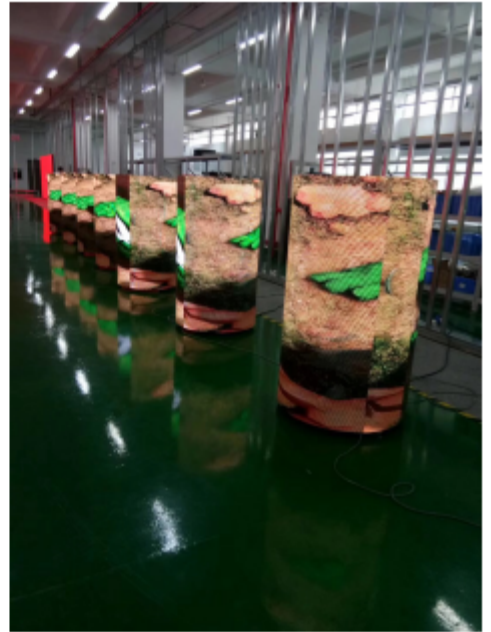
No.4



Step Two

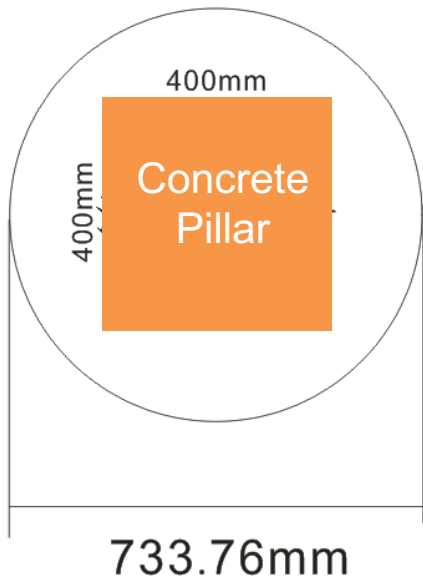


Step Two



Step Three





Top Part:

P4 flexible sector module:

top 316.19mm bottom 222.48mm side 320mm *9pcs

top 222.48mm bottom 156.65mm side 321mm *9pcs

top 179mm bottom 127.35mm side 321mm *9pcs

Bottom Part:

P4 flexible module: W9*H20pcs

Cylinder screen perimeter: 2.304m

Cylinder screen height: 2.56m